



HUNTSVILLE INTERNATIONAL AIRPORT
INTERNATIONAL INTERMODAL CENTER
JETPLEX INDUSTRIAL PARK

PORT OF HUNTSVILLE

1000 Glenn Hearn Blvd.
Box 20008
Huntsville, AL 35824

Tel: 256.772.9395
Fax: 256.772.0305
www.hsvairport.org

FOR IMMEDIATE RELEASE:

September 2, 2011

Laura L. Gipson
Public Relations Manager
256-258-1977
(after hours) 256-679-7172

NEWS RELEASE

Industrial Access Road to Open in Jetplex Industrial Park

Portion of James Record Road to remain closed following drainage improvements

Motorists maneuvering in and around the Jetplex Industrial Park as well as passengers utilizing Huntsville International Airport will soon have an easier time navigating traffic. An Industrial Access Road, which began construction more than two years ago, is set to open this weekend. In an effort to replace temporary access to the new Navistar Big Bore facility on I-565 immediately east of the airport interchange as well as help enhance traffic flow at the interchange of James Record Road and Glenn Hearn Boulevard, the Airport Authority initiated the \$6.2 million Industrial Access Road project in 2009. The project consists of a three-lane industrial access road that connects to a modified intersection of Glenn Hearn Boulevard and James Record Road in order to minimize ground-level crossing traffic.

According to Brooks Kracke, Jetplex Industrial Park Director, Port of Huntsville, "A number of tenants will be able to utilize the new industrial access road – including Navistar, LG Electronics, Raytheon, Turner Universal, Perez Services and Parfums de Couer, Ltd. – which accounts for more than 1,500 employees."

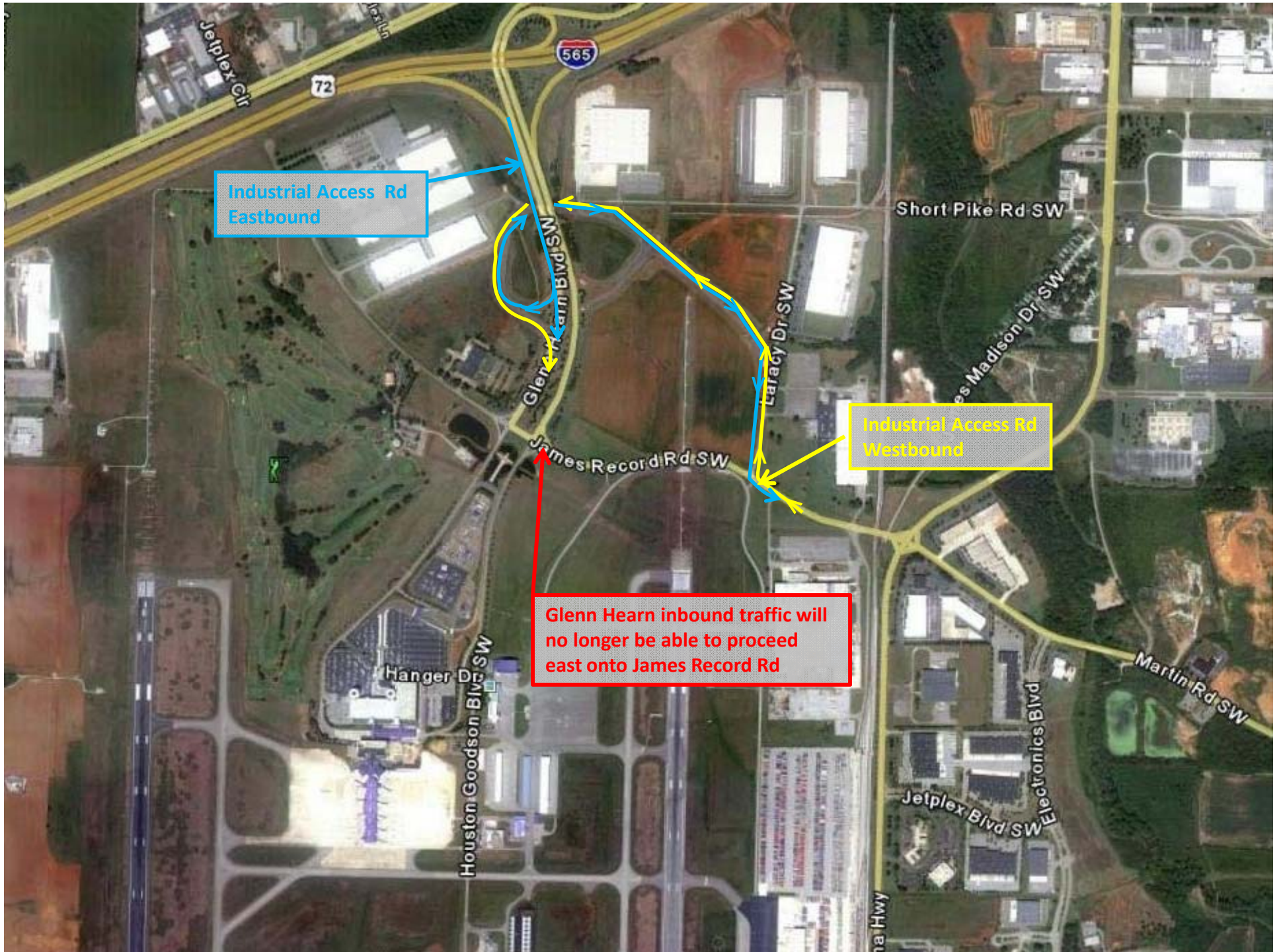
Rick Tucker, Executive Director, Port of Huntsville, stated, "The number of tenants within the Jetplex continues to grow as well as the number of passengers utilizing the airport. Combine that with the increase in vehicles using the airport I-565 interchange to access Redstone Arsenal, and it is without question that this economic development project was an absolute necessity."

The Airport Authority secured a \$4.3 million industrial access road and bridge grant through the Alabama Department of Transportation, which was administered by the City of Huntsville. In addition to this monetary grant, the Airport Authority has received an outpouring of support from Madison County. Approximately 70,000 cubic yards of dirt was acquired from acreage within the Jetplex Industrial Park where development was set to begin, and the County Engineering Department was instrumental in using its equipment to move and stockpile the dirt in addition to cutting the initial road formation. As a final phase of the project, the Airport Authority is working with the City of Huntsville and Redstone Arsenal to widen and upgrade portions of James Record Road and Martin Road from Laracy Drive to Redstone Arsenal Gate 7 at Zierdt Road to accommodate the anticipated growth from BRAC.

In a separate project beginning September 6, Huntsville International Airport will work to enhance safety by eliminating at-grade crossings at the James Record Road/Glenn Hearn Boulevard intersection. This work, which is expected to last up to 45 days, will eliminate eastbound James Record Road traffic, requiring all motorists to utilize the new Industrial Access Road.

###

Enclosure: See enclosed map for traffic routes along Industrial Access Road.



Industrial Access Rd Eastbound

Industrial Access Rd Westbound

Glenn Hearn inbound traffic will no longer be able to proceed east onto James Record Rd