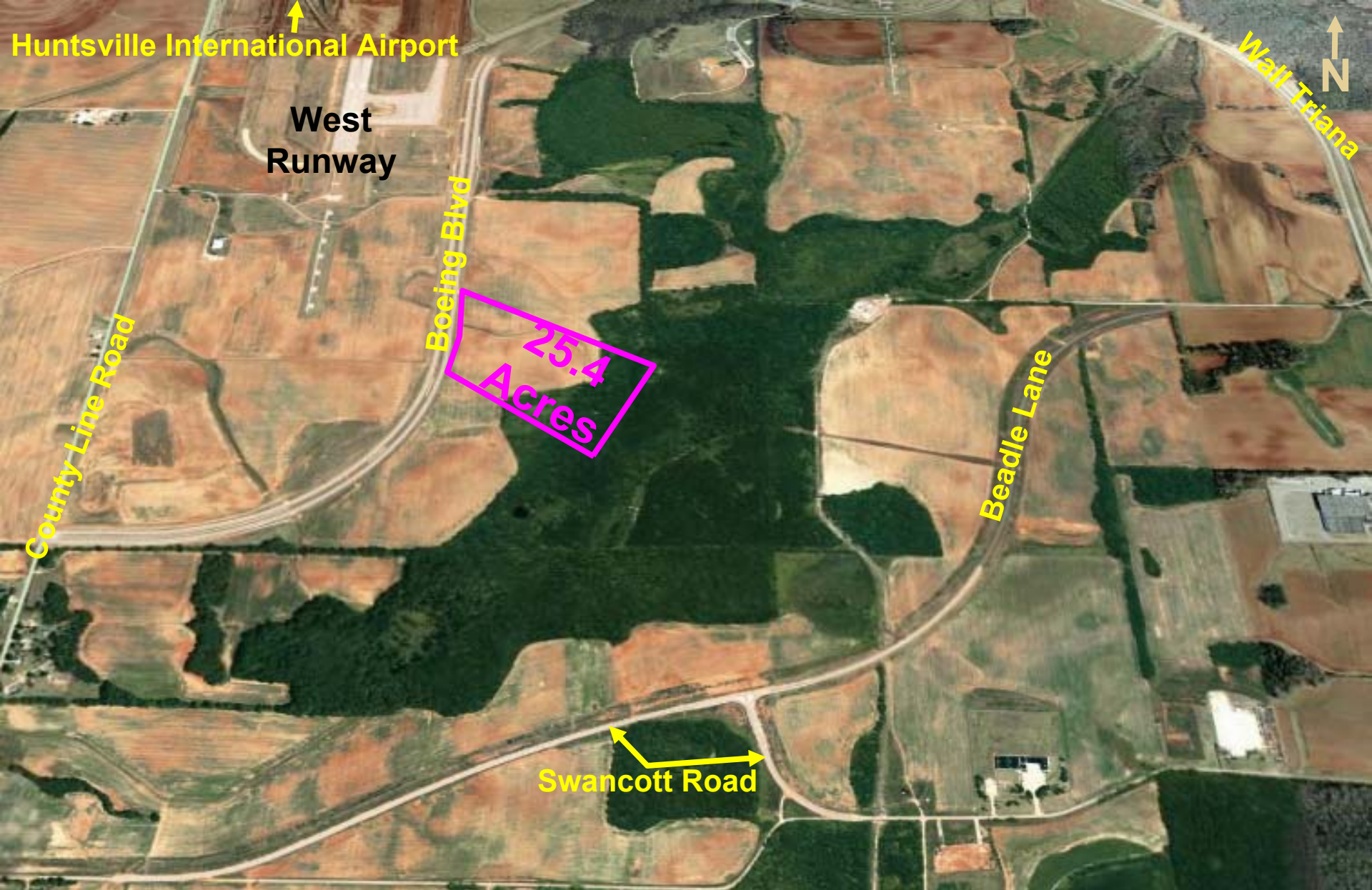


|  |  |
|--|--|
| <b>Street Address</b>  | Boeing Blvd, Jetplex Industrial Park South   |
| <b>For Sale</b>  | Yes = \$45,000/acre                          |
| <b>For Lease</b>   | No   |
| <b>Total Acreage</b>   | 25.4   |
| <b>Infrastructure information</b>  |  |
| <b>Distance to Major Interstate</b>  | I-565 = 4 miles (apx); I-65 = 11 miles (apx) |
| <b>Distance to Major Highway</b>   | Hwy 72 = 6 miles (apx)                       |
| <b>Distance to Major Commercial Airport</b>  | Huntsville International = 3 miles (apx)     |
| <b>Distance to Port</b>  | Decatur = 20 miles (apx)                     |
| <b>Rail Access</b>   | No   |
| <b>Utilities</b>   |  |
| <b>Electric Service</b>  | Yes - Athens                                 |
| <b>Natural Gas If yes, line size</b>   | Huntsville Utilities - 12"                   |
| <b>Sewer Service If yes, line size</b>   | No   |
| <b>Water Service If yes, line size</b>   | Huntsville Utilities - 24"                   |
| <b>Contact Information</b>   |  |
| <p><b>Brooks Kracke - Director, Jetplex Industrial Park</b><br/> <b>Huntsville-Madison County Airport Authority</b><br/> <b>1000 Glenn Hearn Blvd., Box 20008</b><br/> <b>Huntsville, Alabama 35824</b></p> <p>(256) 772-9395 - Phone                      (256) 772-0305 - Fax<br/> brooks@hsvairport.org                      www.hsvairport.org</p> |  |



Huntsville International Airport

West Runway

County Line Road

Boeing Blvd

25.4 Acres

Beadle Lane

Swancott Road

Wall Triana

Jetplex Industrial Park South – Boeing Blvd  
Huntsville, Alabama

